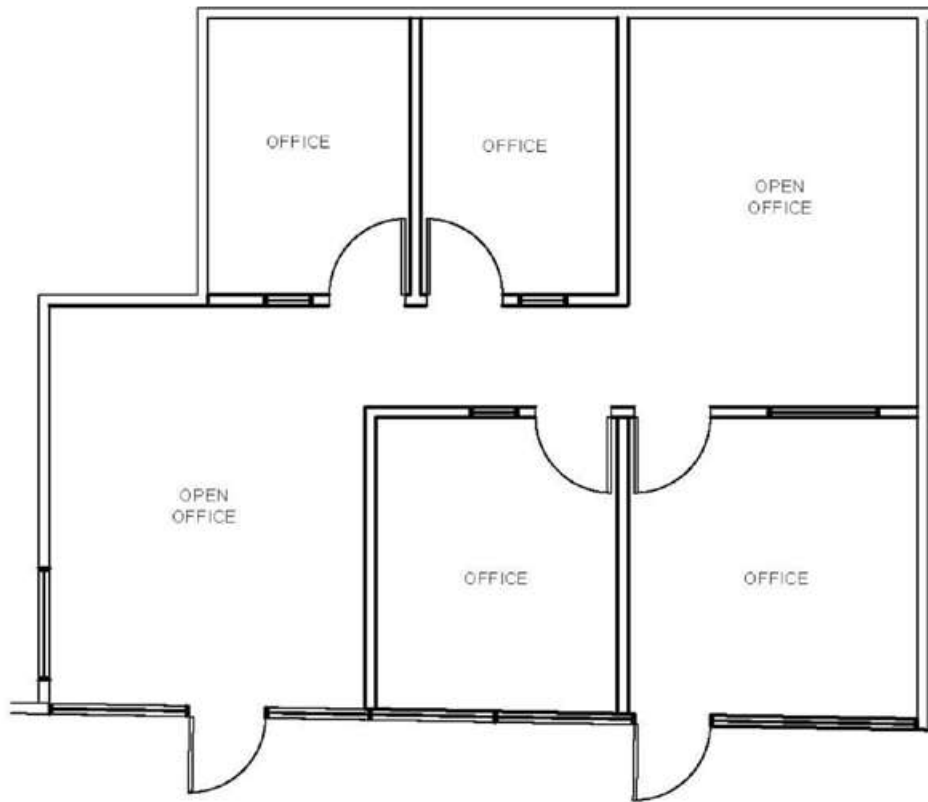


MacArthur Park

2901 - 2961 W. MACARTHUR BLVD | SANTA ANA

SUITE 210/211 | ±1,166 RSF



Call to show. All suites are locked.

FOR MORE INFORMATION,
PLEASE CONTACT:

CARTER HARRINGTON
949.724.4710
charrington@lee-associates.com.com
Lic. #01762924

ALEJANDRO SHERRATT
949.724.4740
asherratt@lee-associates.com
Lic. #02159392

 LEE &
ASSOCIATES
NEWPORT BEACH